

# Installing the Scanner and its Driver

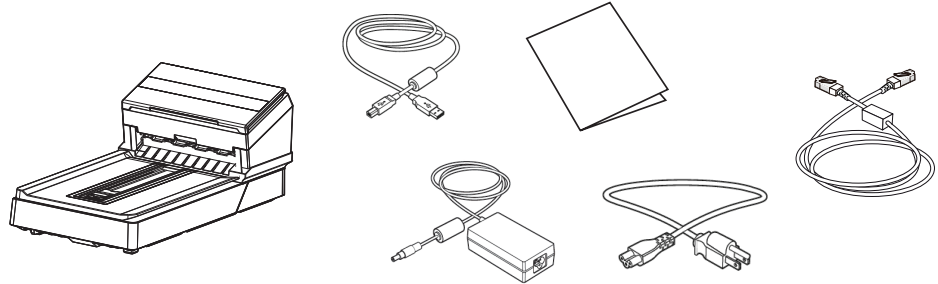


251-1565-0V200

Erste Schritte Démarrage Guida introduttiva Procedimientos iniciales Começando  
Rozpoczęcie użytkowania Подготовка к работе התחלת העבודה 시작하기 入門指南 العربية.

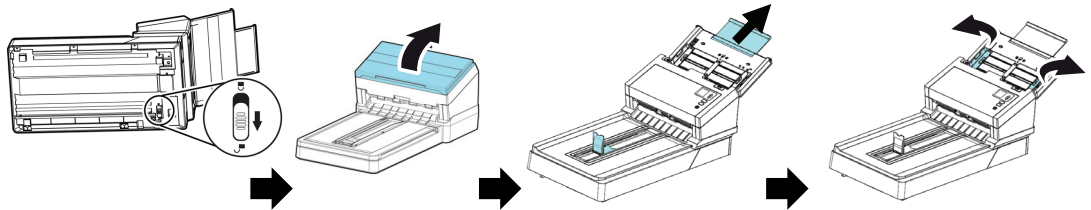
## 1 What's in the box

Deutsch Lieferumfang  
Français Ce que contient la boîte  
Italiano Contenuti della confezione  
Español Contenido del paquete  
Português O que vem na caixa  
Polski Zawartość opakowania  
Русский Содержимое коробки  
עברית תוכן האריזה  
日本語 箱の中身  
한국어 내용물  
繁體中文 包裝內容  
الصندوق محتوى



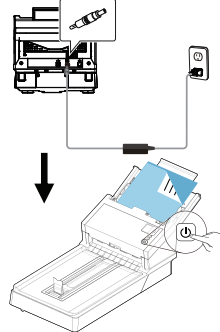
## 2 Install the scanner

Scanner installiere  
Installer le scanner  
Installazione dello scanner  
Instalar el escáner  
Instalar o Scanner  
Zainstaluj skaner  
Установка сканера  
התקנת הסורק  
スキャナーの設置  
스캐너 설치하기  
安裝掃描器  
الضوئي الماسح بتهيئة قم



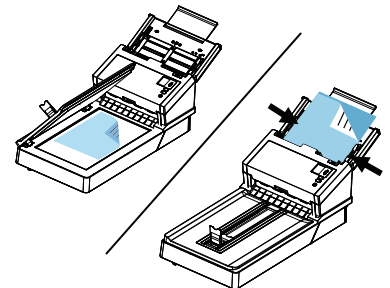
## 3 Connect to Power

Mit der Stromversorgung verbinden  
Brancher l'alimentation  
Collegamento all'alimentazione  
Conectar la alimentación  
Connecte à energia  
Podłącz zasilanie  
Подключение к источнику питания  
חיבור לחשמל  
電源に接続する  
전원에 연결하기  
連接電源  
بالطاقة الاتصال



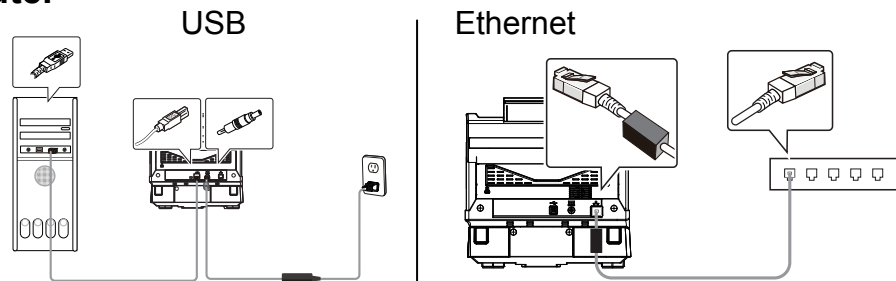
## 4 Place a document

Dokument auflegen  
Placez un document  
Mettere un documento  
Colocar un documento  
Colocar um documento  
Umieść dokument  
Поместите документ  
הנח מסמך  
書類を配置する  
문서를 배치합니다  
放置文件  
ضع وثيقة



## 5 Connect to Computer

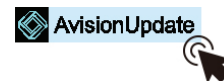
Mit dem Computer verbinden  
Raccorder à l'ordinateur  
Collegamento al computer  
Conectar a su PC  
Conecte ao computador  
Podłącz do komputera  
Подключение к компьютеру  
חיבור למחשב  
コンピューターに接続する  
컴퓨터에 연결하기  
連接電腦  
بـالكمبيوتر الاتصال



➔ Make sure the scanner has been connected to your computer with a USB cable before installing the software.

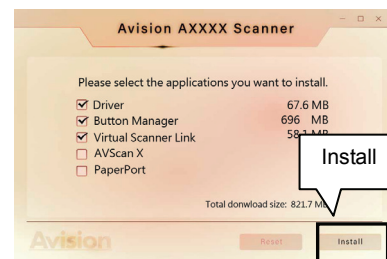
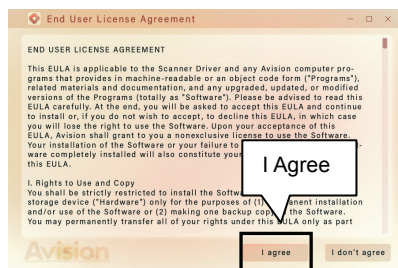
## 6 Install the Software - Download and run [Avision Update] at [www.avision.com/install](http://www.avision.com/install)

Installieren Sie die Software – Laden Sie [Avision Update] unter [www.avision.com/install](http://www.avision.com/install) herunter und führen Sie es aus  
 Installez le logiciel - Téléchargez et exécutez [Avision Update] sur [www.avision.com/install](http://www.avision.com/install)  
 Instala il software - Scarica ed esegui [Avision Update] su [www.avision.com/install](http://www.avision.com/install)  
 Instale el software - descargue y ejecute [Actualización de Avision] en [www.avision.com/install](http://www.avision.com/install)  
 Instale o software - Baixe e execute [Avision Update] em [www.avision.com/install](http://www.avision.com/install)  
 Zainstaluj oprogramowanie - Pobierz i uruchom [Aktualizację Avision] ze strony [www.avision.com/install](http://www.avision.com/install)  
 Установите программное обеспечение — загрузите и запустите [Avision Update] на сайте [www.avision.com/install](http://www.avision.com/install)  
 התקן את התוכנה - הורד והפעל את [Avision Update] בכתובת [www.avision.com/install](http://www.avision.com/install)  
 ソフトウェアのインストール - [www.avision.com/install](http://www.avision.com/install) で[AvisionUpdate]をダウンロードして実行します  
 소프트웨어 설치 - [www.avision.com/install](http://www.avision.com/install) 에서 [Avision 업데이트] 다운로드 및 실행  
 安裝軟件 - 至 [www.avision.com/install](http://www.avision.com/install) 下載並執行 [Avision Update]  
 وتشغيل برنامج تثبيت [Avision Update] على [www.avision.com/install](http://www.avision.com/install)



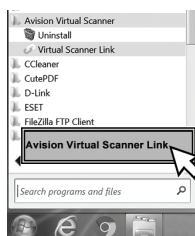
## Install Driver/Button Manager V2/Virtual Scanner Link (VSL)

Treiber/Button Manager/VSL installieren  
 Installer le pilote/ Button Manager/VSL  
 Instala driver/ Button Manager/VSL  
 Instalar controlador/ Button Manager/VSL  
 Instalar Driver/ Button Manager/VSL  
 Zainstaluj sterownik/ Button Manager/VSL  
 Установить драйвер/ Button Manager/VSL  
 VSL/Button Manager V2/בידוקתת  
 ドライバー/VSL/Button Manager のインストール  
 드라이버/VSL/ Button Manager 설치  
 安裝驅動程序/ Button Manager/VSL  
 التشغيل برنامج تثبيت



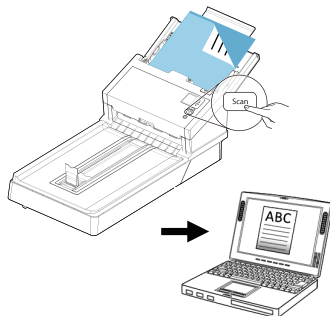
## 7 Open VSL (Virtual Scanner Link) Software (LAN)

Öffnen Sie die VSL-Software  
 Logiciel VSL ouvert  
 Apri il software VSL  
 Abra el software VSL  
 Abra o software VSL  
 Otwórz oprogramowanie VSL  
 Открытое программное обеспечение VSL  
 פתיחת תוכנת VSL  
 オープン VSL ソフトウェア  
 오픈 VSL 소프트웨어  
 開啟 VSL 軟體  
 افتح



## Start a Scan

Einen Scan starten  
 Lancer une numérisation  
 Avviare una scansione  
 Iniciar una digitalización  
 Inicie uma digitalização  
 Rozpocznij skanowanie  
 Запустите сканирование  
 התחלת סריקה  
 スキャンを始める  
 스캔 시작하기  
 開始掃描  
 المسح عملية ابدأ



## Download Driver/Manual at [www.avision.com/download](http://www.avision.com/download)

Laden Sie Treiber/Handbuch unter [www.avision.com/download](http://www.avision.com/download) herunter  
 Téléchargez le pilote/manuel sur [www.avision.com/download](http://www.avision.com/download)  
 Scarica driver/manuale su [www.avision.com/download](http://www.avision.com/download)  
 Descargue el controlador/manual en [www.avision.com/download](http://www.avision.com/download)  
 Baixe Driver/Manual em [www.avision.com/download](http://www.avision.com/download)  
 Pobierz sterownik/instrukcję ze strony [www.avision.com/download](http://www.avision.com/download)  
 Загрузите драйвер/руководство на сайте [www.avision.com/download](http://www.avision.com/download)  
 הורד את מנהל ההתקן/מדריך בכתובת [www.avision.com/download](http://www.avision.com/download)  
 www.avision.com/download でドライバー/マニュアルをダウンロード  
 www.avision.com/download 에서 드라이버/매뉴얼 다운로드  
 請至 [www.avision.com/download](http://www.avision.com/download) 下載驅動程式/使用手冊  
 على السليل/التشغيل برنامج تنزيل قم [www.avision.com/download](http://www.avision.com/download)



### European Union Regulatory Notice

Products bearing the CE marking comply with the following EU Directives:

- Low Voltage Directive 2014/35/EC
- EMC Directive 2014/30/EC
- Restriction of the use of certain hazardous substances (RoHS) Directive 2011/65/EU